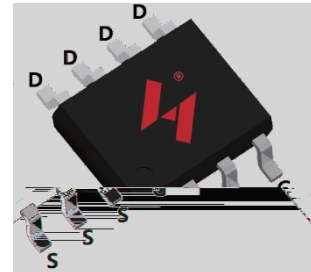




## FeatureDescription

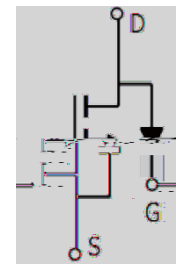
- $\Omega$
- $\Omega$
- 
- 
- 

## Pin Description




## Applications

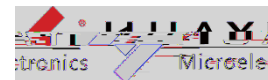
- 
- 
- 



## Ordering and Marking Information

	
---	--

# HYG260P03LR1S



## Absolute Maximum Ratings

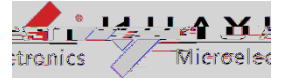
Symbol	Parameter	Rating	Unit
<b>Common Ratings</b>			
<b>Mounted on Large Heat Sink</b>			
$\theta$			

$\Omega$  .

## Electrical Characteristics

Symbol	Parameter	Test Conditions	HYG260P03LR1			Unit
			Min	Typ.	Max	
<b>Static Characteristics</b>						
						$\mu$
						$\mu$
		W				

# **HYG260P03LR1S**



## **Electrical Characteristics (Cont.)**

<b>Symbol</b>	<b>Parameter</b>
---------------	------------------

## Typical Operating Characteristics

Figure 1: Power Dissipation

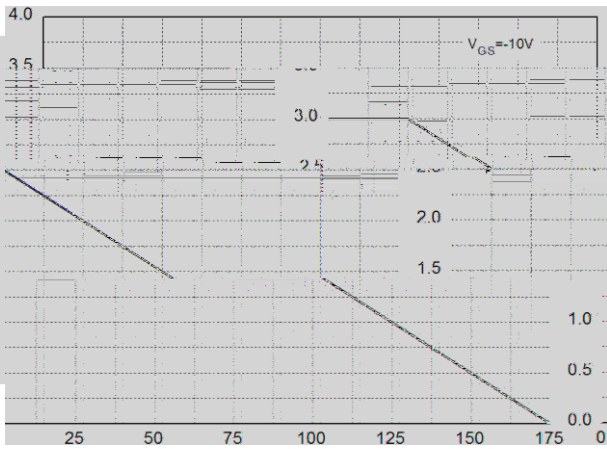


Figure 2: Drain Current

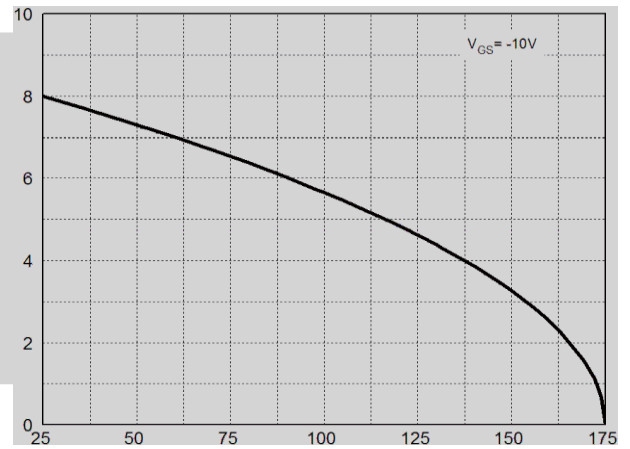


Figure 3: Safe Operation Area

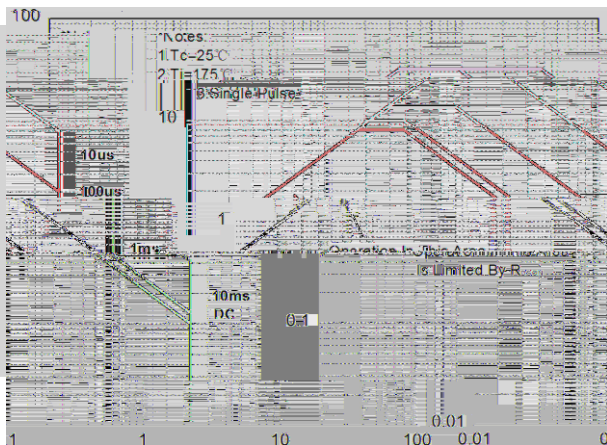


Figure 4: Thermal Transient Impedance

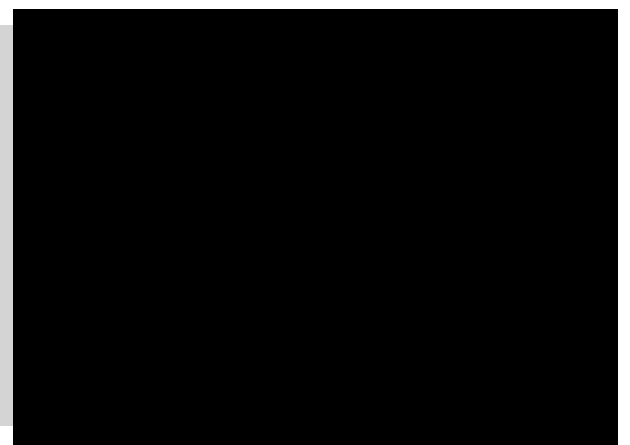


Figure 5: Output Characteristics

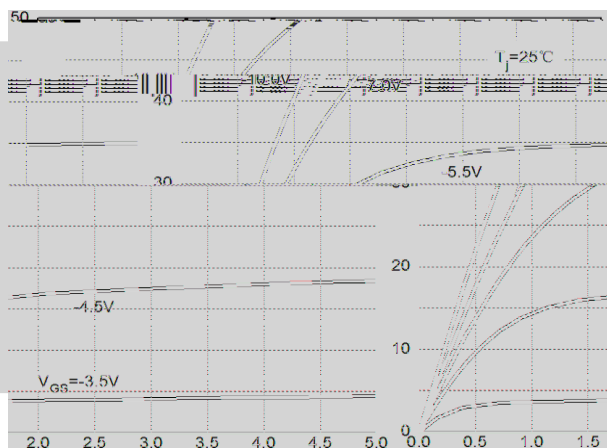
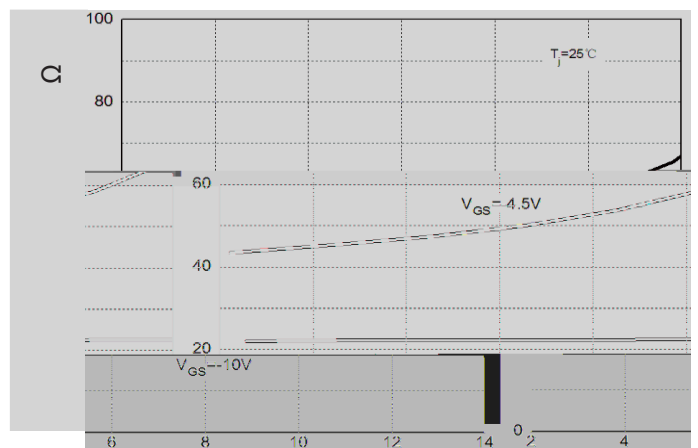


Figure 6: Drain-Source On Resistance



## Typical Operating Characteristics(Cont.)

Figure 7: On-Resistance vs. Temperature

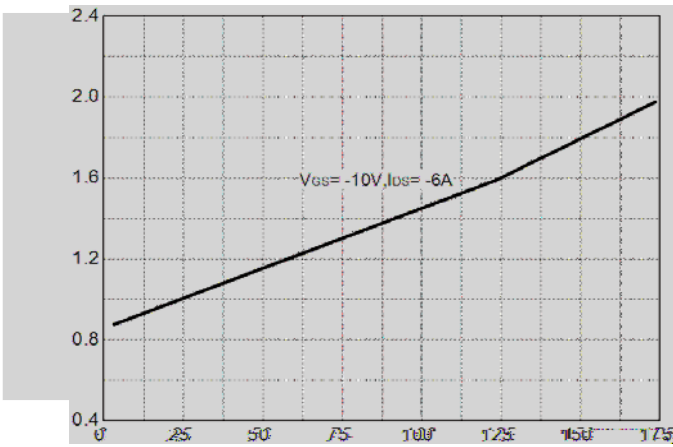


Figure 8: Source-Drain Diode Forward

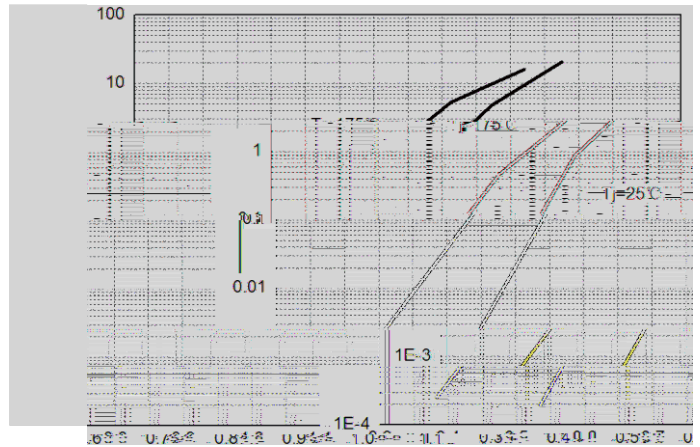


Figure 9: Capacitance Characteristics

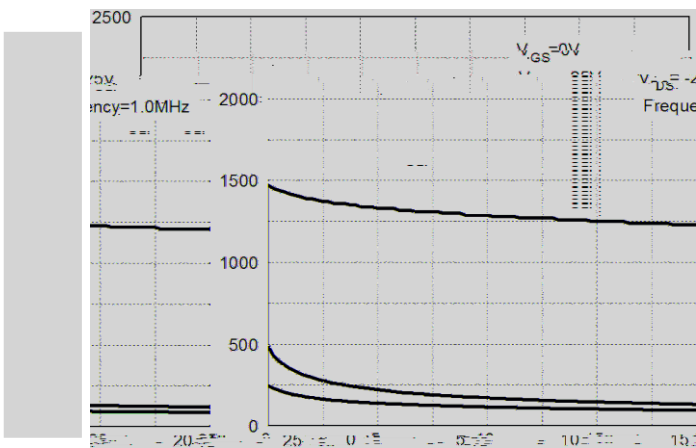
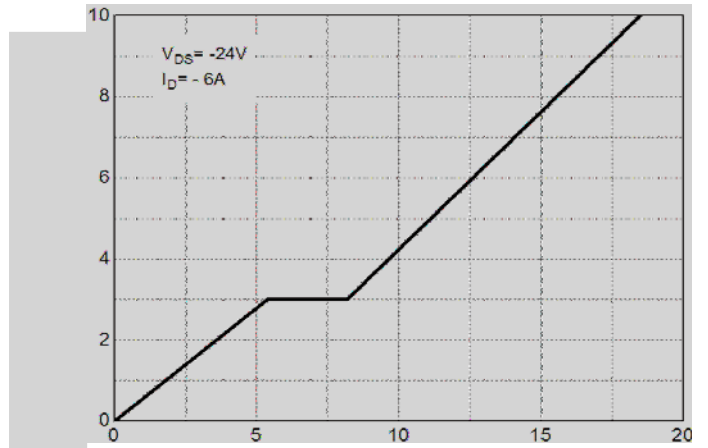
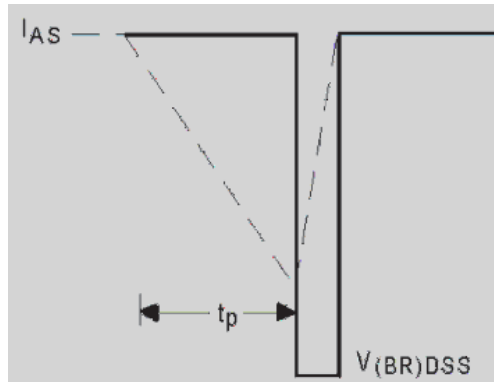
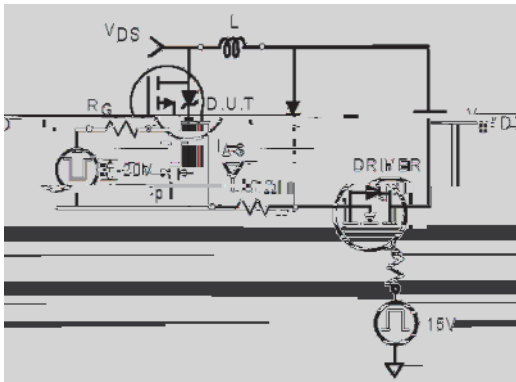


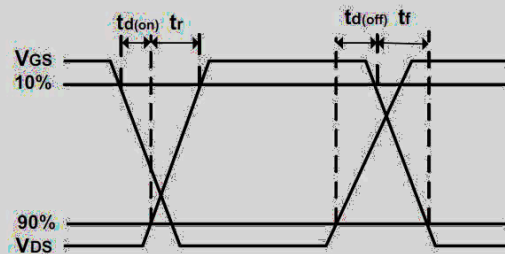
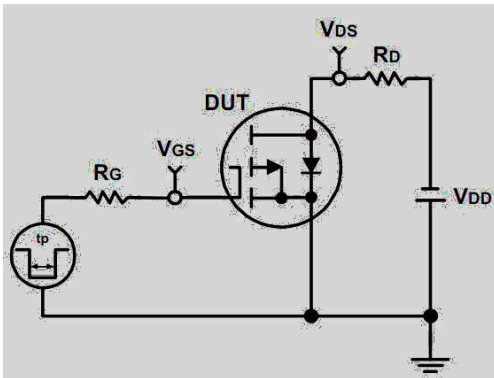
Figure 10: Gate Charge Characteristics



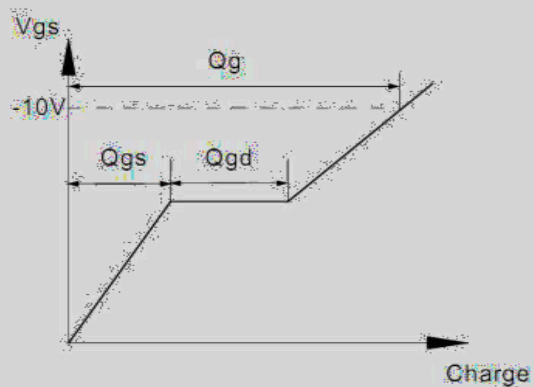
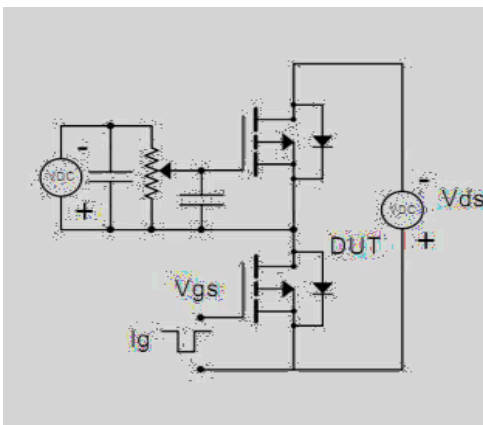
## Avalanche Test Circuit



## Switching Time Test Circuit



## Gate Charge Test Circuit



# HYG260P03LR1S

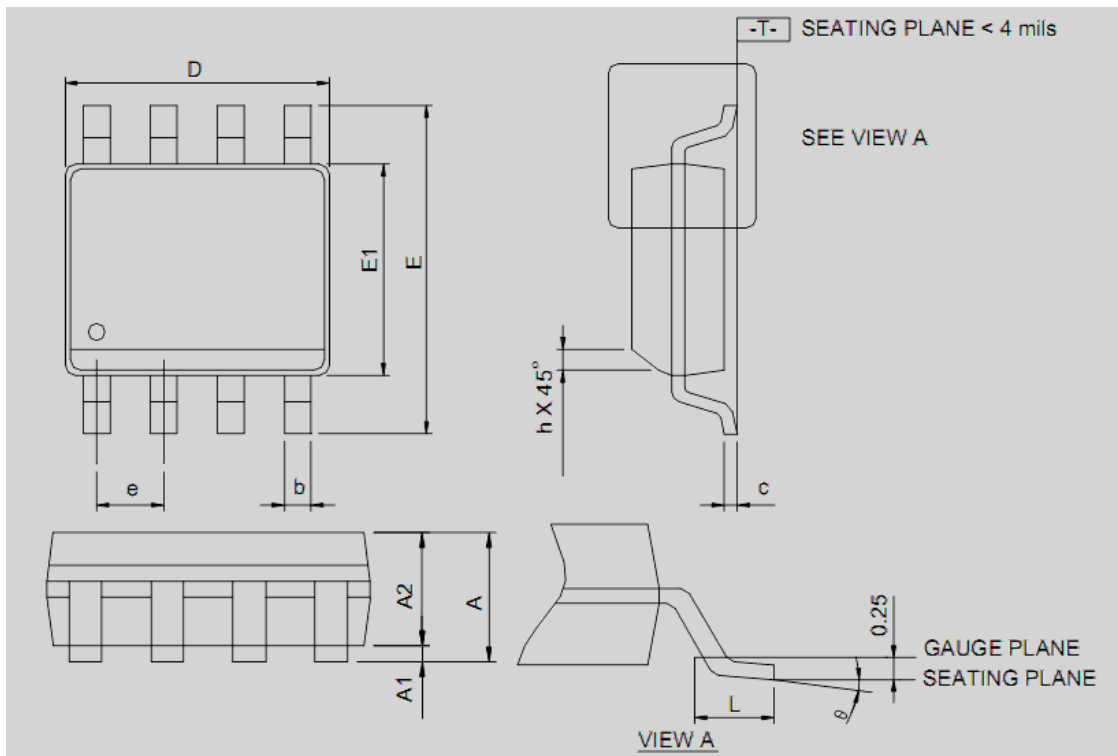


## Device Per Unit

Package Type	Unit	Quantity

## Package Information

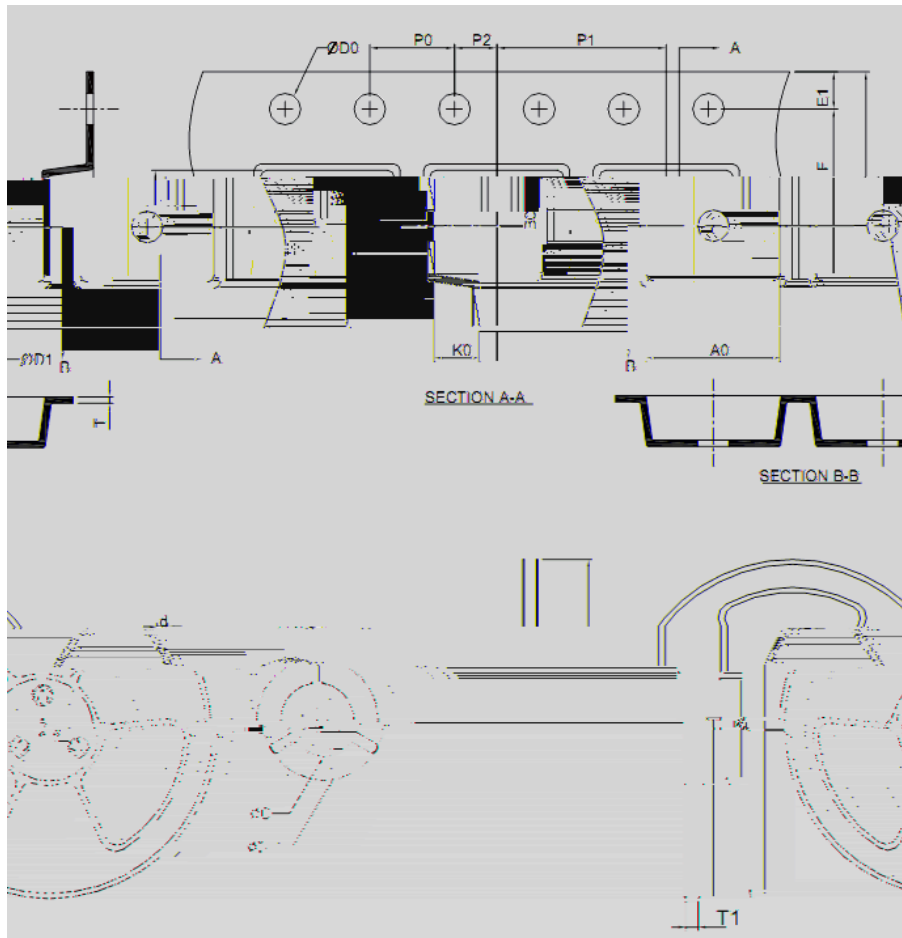
SOP-8L



DIMENSION	MILLIMETERS		INCHES	
	MIN.	MAX.	MIN.	MAX.
A	-	1.75	0.069	-
A1	0.10	0.25	0.004	0.010
A2	1.25	-	0.049	-
b	0.31	0.51	0.012	0.020
c	0.17	0.25	0.007	0.010
D	4.80	5.00	0.189	0.197
E	5.80	6.20	0.228	0.244
E1	3.80	4.00	0.150	0.157

RECOMMENDED LAND PATTERN

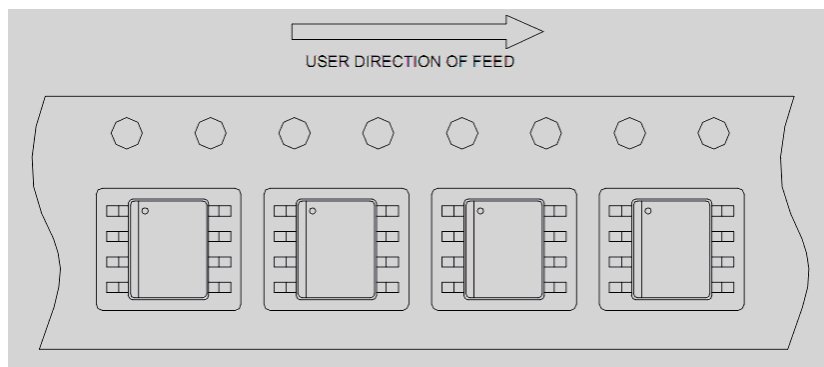
## Carrier Tape & Reel Dimensions



Application	A	H	T1	C	d	D	W	E1	F
	330.0 2.00	50 MIN.	12.4+2.00 -0.00	13.0+0.50 -0.20	1.5 MIN.	20.2 MIN.	12.0 0.30	1.75 0.10	5.5 0.05
SOP-8L	P0...	P1...	P2...	P0...	P1...	T...	A0...	B0...	K0...
	4.0±0.10	6.0±0.10	2.0±0.05	1.5±0.10 -0.00	1.5 MIN.	0.6±0.00 -0.40	6.40±0.20	5.20±0.20	2.0±0.20

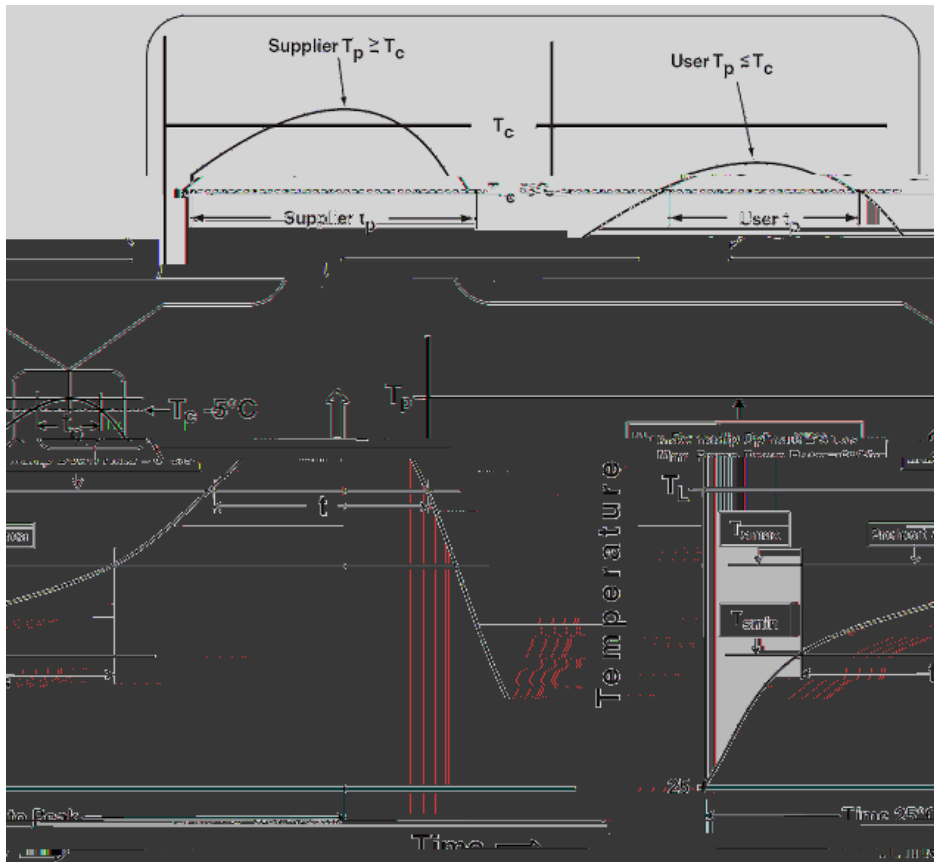
(mm)

## Taping Direction Information





## Classification Profile



## Classification Reflow Profiles

Profile Feature	Sn-Pb Eutectic Assembly	Pb-Free Assembly
Preheat & Soak		

Package Thickness	Volume mm <350	Volume mm 350

**Customer Service**