
-

-

-

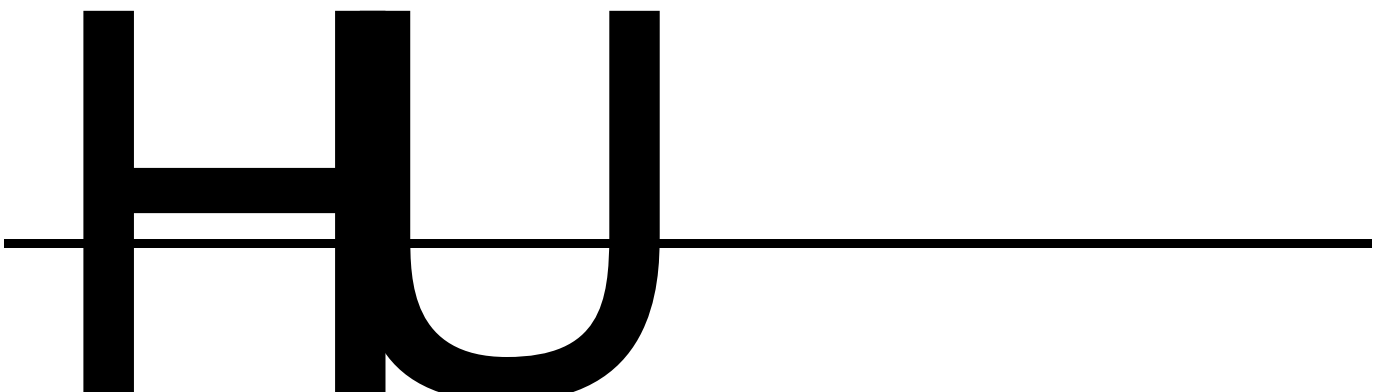
-

0 0 0 1

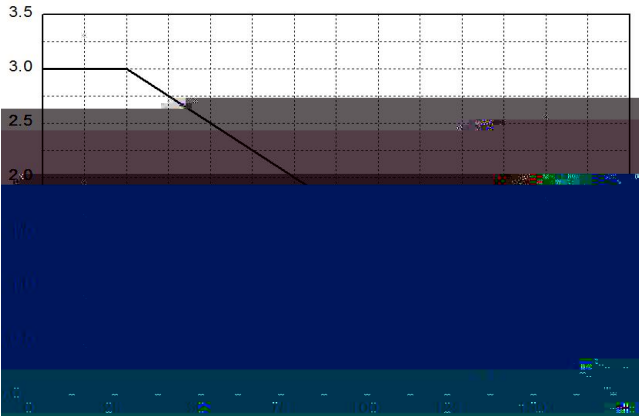
(.)

0 0 0 1

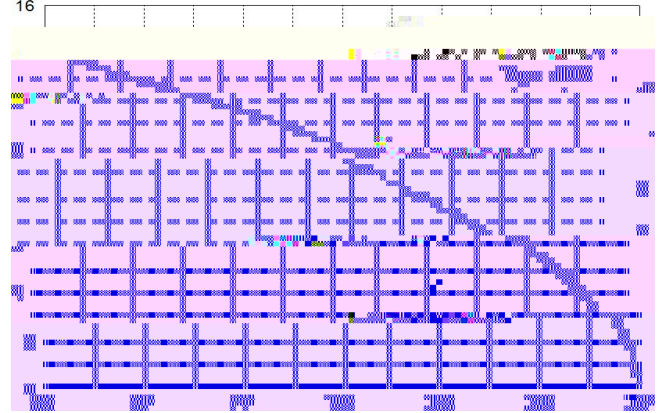
.

 HU

1

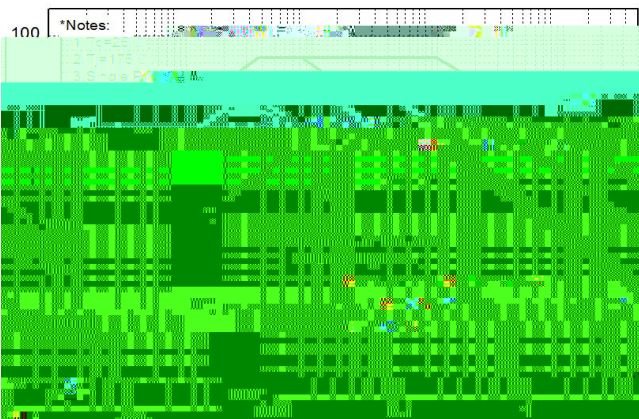


16

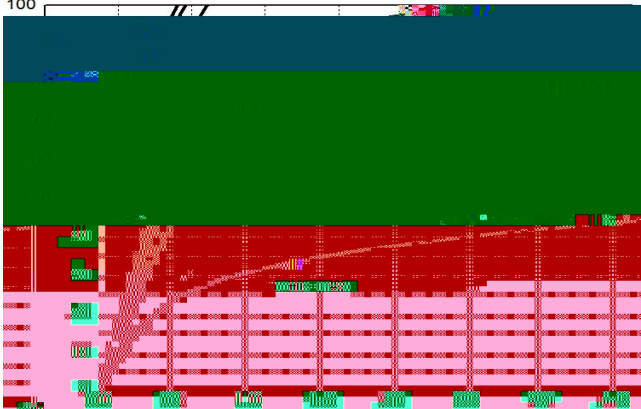


100

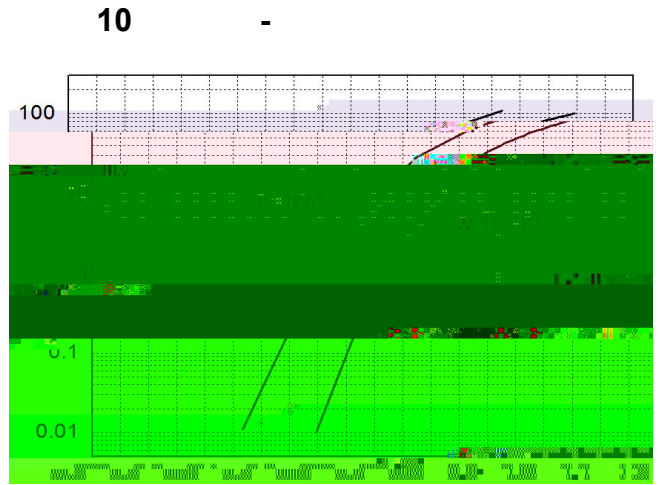
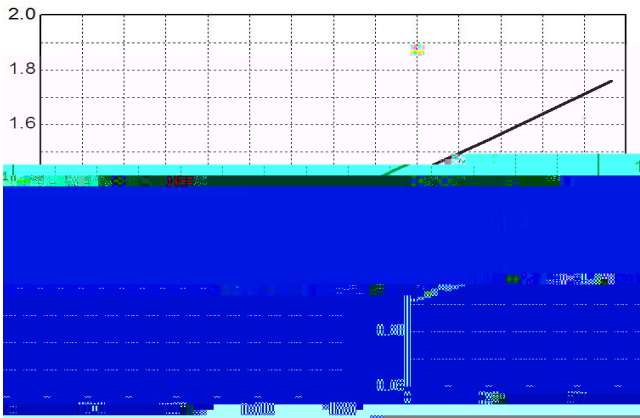
*Notes:



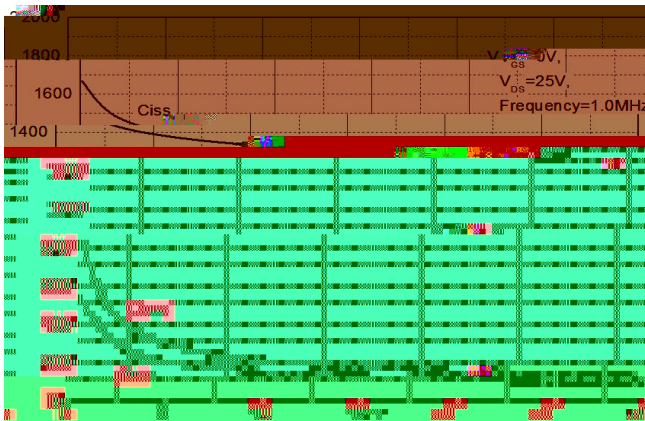
100



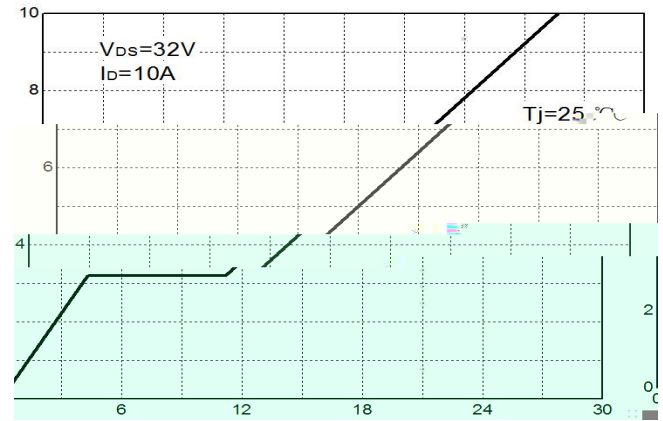
(.)

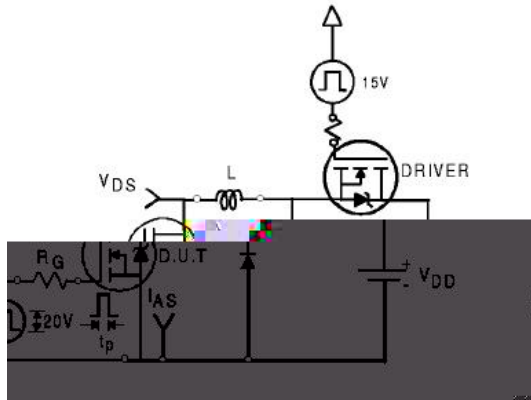


11

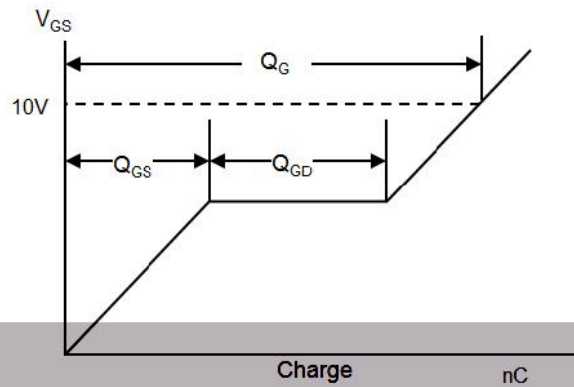
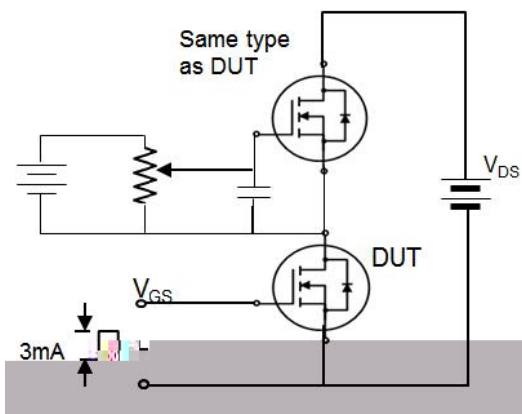
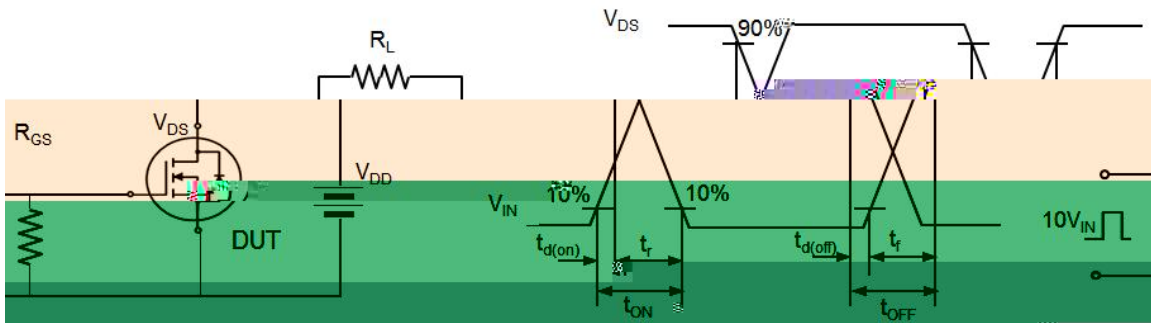
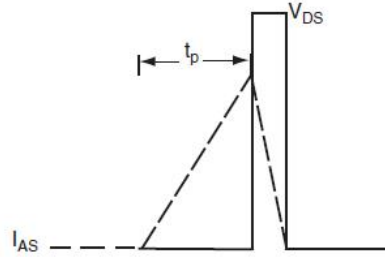


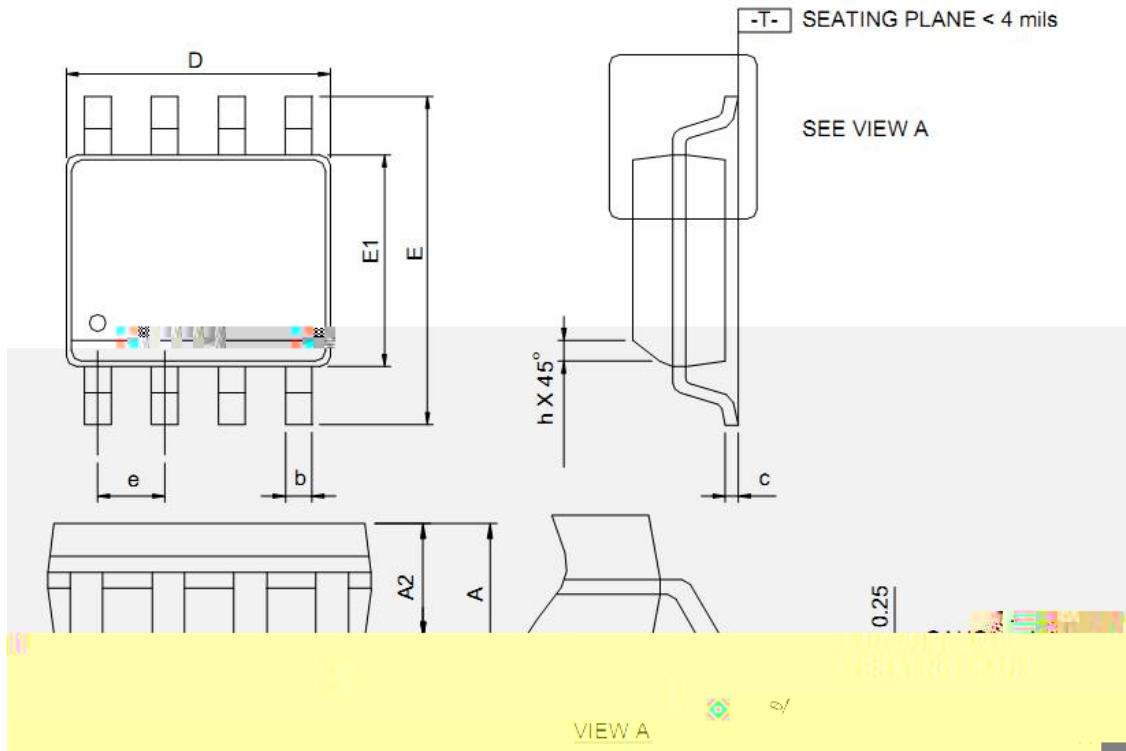
1





$$E_{AS} = \frac{1}{2} L I_{AS}^2$$

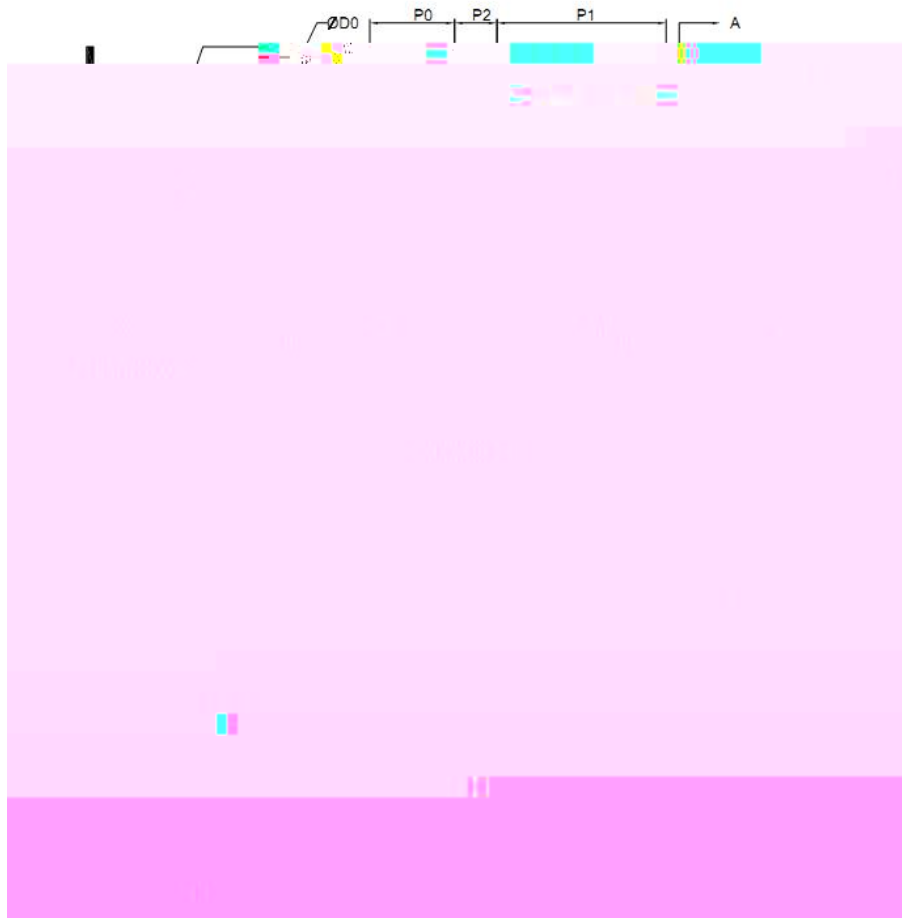




S	SOP-8L				RECOMMENDED LAND PATTERN
	MILLIMETERS		INCHES		
	MIN.	MAX.	MIN.	MAX.	
A	-	1.75	-	0.069	1.27
1.27	0.010	0.05	0.004	0.019	

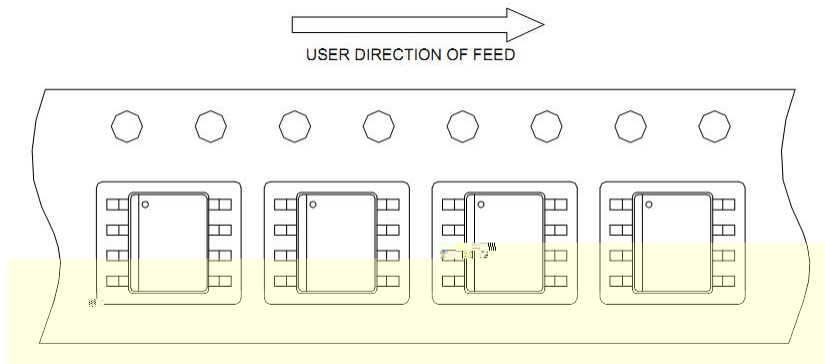
Color-coded PCB land pattern diagram for SOP-8L component. The diagram shows a central component footprint with various colored regions: red for the main body, yellow for the leads, and blue for the pads. A dimension of 1.27 is shown for the lead spacing.

&



Application	A	H	T1	C	D	W	E1	F	
SOP-8L	330.0 2.00	50 MIN.	12.4+2.00 -0.00	13.0+0.50 -0.20	1.5 MIN.	20.2 MIN.	12.0 0.30	1.75 0.10	5.5 0.05
	P0	P1	P2	D0	D1	T	A0	B0	K0
	4.0 0.10	8.0 0.10	2.0 0.05	1.5+0.10 -0.00	1.5 MIN.	0.6+0.00 -0.40	0.40 0.20	0.20 0.20	2.10 0.2

(mm)



	0	0

	0	0- 000	000
